

## Modern Classic SLRs Series : Canon F1 - Camera Operations Part II

This section covers:

Film Speed Setting

Full Aperture Metering

Setting the Exposure - Stopped Down Metering

Shutter Dial Adjustment

[Part I](#) | [Part II](#) | [Part III](#) | [Part IV](#)

### Film Speed Setting

The ASA film speed scale is coupled to the meter and correct exposure cannot be measured if the scale is not correctly set.



Set the film speed correctly every time you load a new roll. When you wish to check the battery power source, set the film speed at ASA 100 regardless of the type of film you are using, but be sure to set the film speed correctly afterwards. Lift the shutter speed scale and turn it to the correct film speed.

The film speed scale cannot be turned clockwise beyond 25 nor counterclockwise beyond 2000.

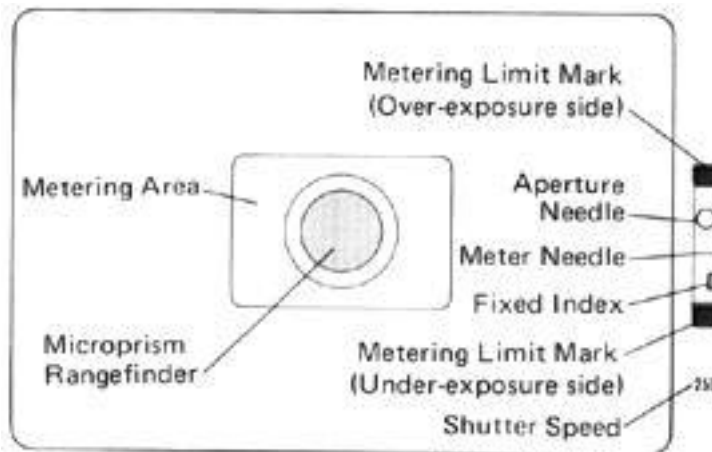


The corresponding index is as follows:

(32)	(40)	(64)	(80)	(125)	(160)	(250)	(320)	(500)	(640)	(1000)	(1250)	(2000)							
ASA 25	50	100	200	400	800	1600													
(DIN) 15	16	17	18	19	20	21	22	23	24	25	26	27	28	29	30	31	32	33	34

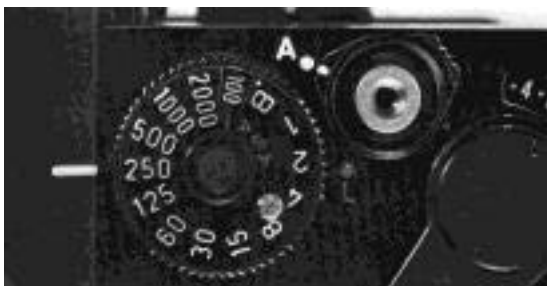
## Full Aperture Metering

The F-1 has a full aperture metering device. After measurement, the diaphragm closes down automatically to the preset f/stop for correct aperture when the shutter release button is pressed.



Basically, the process is the following:

First of all you must focus on the intended subject and then you let that subject come into the rectangle in the middle of the viewfinder. This part corresponds to the CdS cell that receives incoming light. Then, turn the shutter dial or the preset aperture ring so that the aperture needle aligns with the meter needle. As a rule, when you intend to shoot a fast moving subject, you can set the shutter speed first and then set the aperture by turning the aperture ring. This is the so called shutter priority method.



Adjust the middle of the aperture needle circle to the meter needle. The upper and lower edges of the aperture needle circle are +0.5 and -0.5 EV, and the center of the circle is the correct exposure. This might prove helpful to adjust exposure properly. When the shutter is set at low speeds beyond the coupling range, the

meter window turns red as a warning that the meter is not coupled at that speed. A faster shutter speed must be selected. If the aperture and meter needles still cannot be matched, the Booster T Finder should be used.

## Shutter Dial Adjustment

When the meter needle swings all the way up, select a faster shutter speed, and when it swings all the way down, select a slower one.

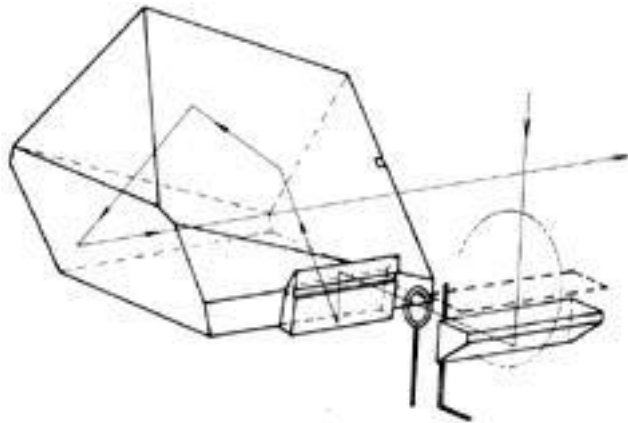
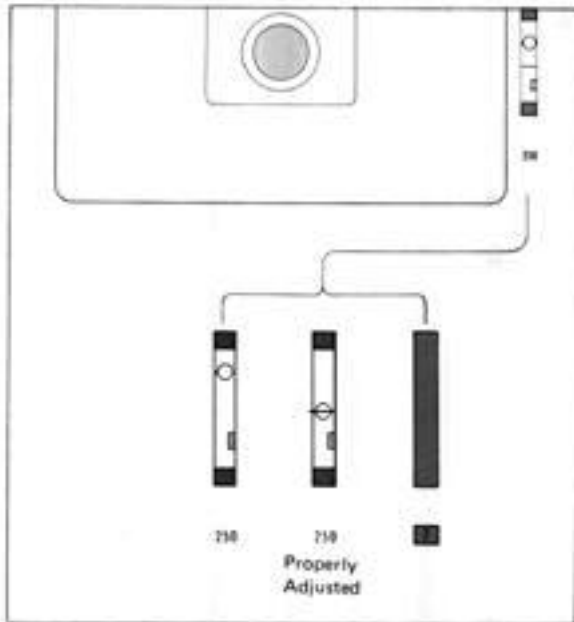
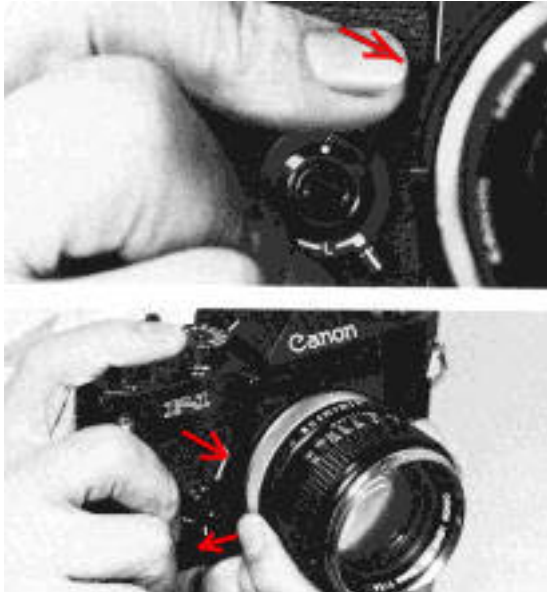


Illustration in relative how the needle moves in exposure measurement.

## Setting the Exposure - Stopped Down Metering

When you turn the aperture ring while pushing the multi-purpose stopped-down lever down at the same time, the diaphragm will open or close accordingly.

If you remove your finger from the lever, the diaphragm returns to full aperture. The stopped-down functioning lever can be locked for continuous light measurement by pressing it towards the lens after setting the lever lock at the "L" position.



When the aperture is stopped down, the aperture needle does not appear in the window but the meter needle does. Turn the aperture ring or shutter speed dial until the meter needle is aligned with the fixed index.

In stopped down metering, you can adjust the shutter speed before the diaphragm or viceversa. Stopped down metering should not be used with F<sub>n</sub> lenses at apertures larger than F 2.8 because of the built-in correction for full aperture metering.

### Coupling Range of the F-1 Exposure Meter

	25	1	1/2	1/4	1/8	1/15	1/30	1/60	1/125	1/250	1/500	1/1000	1/2000
	50	1/2	1/4	1/8	1/15	1/30	1/60	1/125	1/250	1/500	1/1000	1/2000	
Film Speed ASA	100	1/4	1/8	1/15	1/30	1/60	1/125	1/250	1/500	1/1000	1/2000		
	200	1/8	1/15	1/30	1/60	1/125	1/250	1/500	1/1000	1/2000			
	400	1/15	1/30	1/60	1/125	1/250	1/500	1/1000	1/2000				
	800	1/30	1/60	1/125	1/250	1/500	1/1000	1/2000					
	1600 (2000)	1/60	1/125	1/250	1/500	1/1000	1/2000						
Range of f/stop	1-22	1-22	1-22	1-22	1-22	1-22	1-22	1-22	1-22	1-16	1-11	1-8	1-5.6

| [Back](#) | [Next](#) |

Next section covers:

Film Loading  
Film Rewinding  
Shutter Dial  
Cable Release  
Mirror Lock

[Part I](#) | [Part II](#) | [Part III](#) | [Part IV](#)

---

[Home](#) - Photography in Malaysia

