

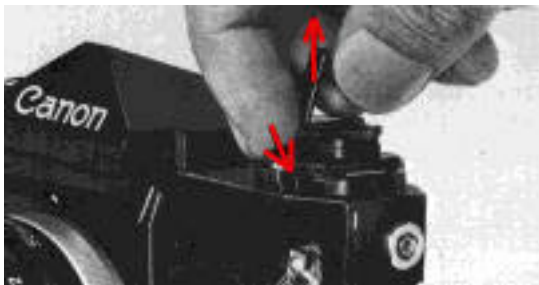
Modern Classic SLRs Series : Canon F1 - Camera Operations Part III

This section covers:

Film Loading
Film Rewinding
Shutter Dial
Cable Release
Mirror Lock

Film Loading

This camera accepts only 35mm film roll in standard cartridges. The following steps show the procedure for film loading: * May be very simple to some of the experienced or seasoned photographer, but this is part of the operation manual, so just to do the routine work.



Pull the film rewind crank out while pressing the safety stopper. The back cover will then rise slightly. Take the film cartridge so that it faces the way the illustration shows, and insert it in the cartridge compartment.

Push the film rewind crank back into its original position.

The crank fork will slip into the axis of the film cartridge. In case the crank does not return completely, turn it lightly right and left until it does. Pull film out of the cartridge and insert its tip into the slit of the take-up spool about two perforations from the end.

Turn the film advance lever and wind film around the take-up spool.

Engage the sprockets of the take-up spool and the teeth of the film advance sprocket with the perforations on the film. And then, close the back cover.

If the film is slack, the cartridge will rise and the back cover cannot be closed.

Leave the lens cap on and make two blank shots. The frame counter will advance from the "S" mark to "0".

If you advance film once more, the camera will be ready for the first shot.

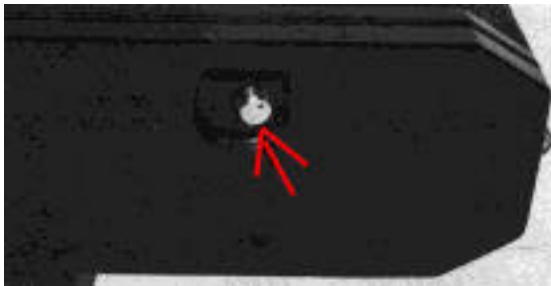


If the film rewind crank rotates when you wind the film advance lever, film is loaded properly. When the film is slack, the rewind crank does not rotate, and in such case you had better turn it clockwise to verify. Once you have finished loading film, set the ASA film speed scale. Even if you do not intend to use a meter, you should not forget the ASA setting. The film speed is marked on the package of film.



Film Rewinding

When all the film has been exposed and the film advance lever stops, rewind the film into the cartridge as soon as possible. Be sure not to open the back cover before rewinding it, otherwise the entire roll will be exposed and ruined.



Press the film rewind button. Then raise the film rewind crank, turn it clockwise and rewind film into the cartridge. When resistance to re winding film becomes slight, stop rewinding and open the back cover. Pull the rewind crank fully out and remove the cartridge.



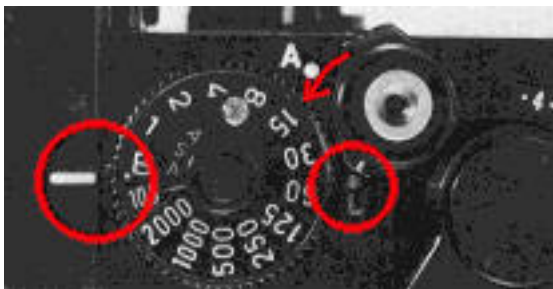
Shutter Dial

This dial controls the exposure time, and its indications are the denominators of the fractions of a second. For example, 2000 means 1/2000 of a second, and 2 means 1/2 a second. When exposure time is set one graduation faster, exposure time is halved. The shutter dial cannot make a full turn.

only move it in the opposite direction.

The "60" index is used for synchronizing the electronic flash. It is identified by a different color.

"B" indicates bulb exposure and is used when making exposures of more than one second. When the shutter speed dial is set at "B", the shutter will remain open as long as the shutter release button is being pressed down.



Time exposures are possible using "B" and the shutter lock. First, set the shutter speed dial at "B". With the shutter release button pressed down, turn the shutter lock lever to the "L" position. The shutter remains open even after you have withdrawn the pressure of your finger from the release button. When the lever is set at "A" once more, the shutter closes.

The "2000" index is most suitable for taking pictures of moving subjects.

Cable Release

When using a tripod, or when time exposure is required, a cable release is also necessary in order to prevent vibrations when shutter release is pressed, and also to make the whole operation easier.



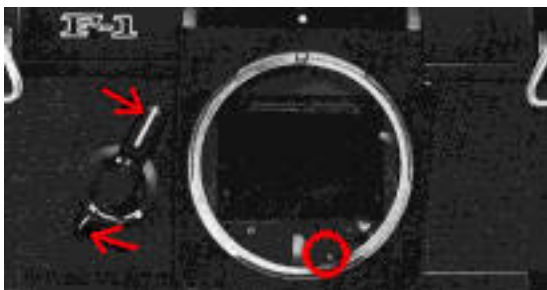
This is a very important instrument in telephoto, copying, close-ups, enlarging, and in photo,micro~graphy. It can be attached by screwing it into the thread in the hole of the center of the shutter release button.

Once attached, it is possible to wind for film advance and the shutter will operate even when it is locked. When a cable release with a lock device is used, you can continue "T" exposures by locking the cable release.



Mirror Lock

In photomicrography or macrophotography, the mirror can be locked in its up position after the picture is composed in the viewfinder, in order to eliminate mirror vibration. To lock it up, push down the stopped-down functioning lever lock to "M". Aperture is then stopped down and can be controlled manually. In this position, manual control is performed with FD and FL lenses. The mirror can be locked independently from the operations of film advance and shutter speed.



The mirror can be locked up with the lens attached. The only exception is the FL 19mm F3.5 lens. The mirror must be locked up before it is attached and a special viewfinder used because this lens is a standard wide angle lens,not a retrofocus type.

The Canon's mirror lock is designed to avoid wasting even a single frame of film, and also to make its handling easy. When the mirror is locked, keep the lens covered always until before you prepare to take a picture. Light may affect film if left without the lens cap.

When you set the self-timer, the mirror is unlocked. Therefore, lock the mirror after setting the self-timer. The 1/2000 of a second shutter speed should not be used because in a single lens

the proper balance may be lost, and even though it is only a fraction of an instant, differences in timing may not be neglected. This phenomenon rarely occurs, but there is no possible guarantee against it.

When the lock lever is returned to its original position, the mirror is unlocked.

| [Back](#) | [Next](#) |